



## Corporate Profile



Developing the most advanced technology  
and keeping it most affordable.  
This is the spirit of SHIMA SEIKI.

**SHIMA SEIKI**



# Ever Onward ———

## A Message from the President

Founded on the development of the world's first fully automated glove knitting machine, we at SHIMA SEIKI MFG., LTD. have continually challenged ourselves to develop innovative technology under our corporate motto "Ever Onward."

Now, SHIMA SEIKI has evolved into a highly trusted manufacturer of computerized glove knitting machines, computerized flat knitting machines, and computer graphic design systems, with a leadership role in a variety of industries worldwide.

As consumer needs are expected to become more and more diverse, we realize the necessity to support diversity for our customers as well. Our efforts continue to focus on these market trends and needs, and we will continue to offer unique and highly value-added products based on the most advanced technologies.

We are a company whose source for inspiration and motivation is our customers, and we deeply appreciate your continuing trust and support. We at SHIMA SEIKI are confident that we can create a mutually beneficial relationship with all of you.

President  
Masahiro Shima

*Masahiro Shima*





## ■ Business Operations

•Masahiro Shima establishes SHIMA SEIKI MFG., LTD., in Wakayama City, Wakayama Prefecture, to produce glove knitting machines that are completely automated.

•Owing to the increasing size of the Company, the administrative offices and factory are moved to Sakata, Wakayama City, the present location.



•Receives a gold medal at an industrial fair in Leipzig, Germany.

•Masahiro Shima receives the 25th Okochi Memorial Technology Award, Japan's most prestigious industrial award for excellence and strength in technological development.

•SHIMA FINE PRESS CO., LTD. is established.

•Opens the Osaka Branch Office.

•Establishes SHIMA SEIKI EUROPE LTD. in the U.K., the company's first overseas subsidiary.

•Opens Taipei Branch in Taiwan.  
•Establishes SHIMA SEIKI U.S.A. INC. in New Jersey.

•Opens the Tokyo Branch Office.  
•The Shima Idea Center of the SHIMA SEIKI Group and Kamitani Electronic Industries, Ltd. merge into SHIMA SEIKI MFG., LTD.

•The new headquarters building is completed.  
•Company shares are publicly listed on the Second Section of the Osaka Securities Exchange.

## ■ Products

1962

1964

1967

1968

1969

1970

1971

1975

1978

1979

1980

1981

1982

1983

1985

1986

1987

1988

1990

•Successfully produces a fully automated glove knitting machine.

•Begins production of the world's first fully automated collar knitting machine, the FAC, and extends its business into the flat knitting machine industry.

•Develops the world's first fully automated semi-full fashion knitting machine, the SF.

•Exhibits its fully automated semi-full fashion knitting machine at the Tokyo Harumi International Knitting Machinery Exhibition. The company's presence at this show ensures it a prominent place among manufacturers of flat knitting machines.

•Develops the world's first fully automated seamless glove knitting machine, the SFG.

•Displays its full line of machinery at the International Textile Machinery (ITMA) Exhibition in Paris. Upon receiving international acclaim, the company begins exporting its products.

•Develops a fully automated jacquard pattern glove knitting machine, the SJG.

•Develops the SNC, a computerized flat knitting machine that revolutionizes the apparel industry.

•Develops the famed SEC computerized flat knitting machine.

•Develops the SDS®-1000 Design System.

•Improves the seamless glove knitting machine through computerization, successfully allowing the production of gloves in a single process on its SFG series.

•Develops the SDS®-500 Design System.

•Displays its full product line at the 9th ITMA Exhibition in Milan, Italy. The main attraction of SHIMA SEIKI's exhibit, the Total Knitting System, gains high recognition from international participants. Introduces the world's first Digital Stitch Control System (DSCS®) that supports knitting with a dimensional error of just ±1%.

•Develops the SDS®-380 series computer graphics system, which is adopted in broadcasting and automotive industries, among others.

•Develops and markets the PGM-2 apparel CAD system.

•Develops its long-anticipated next-generation computerized flat knitting machine, the SES® series.



Fully automated glove knitting machine



FAC



International Textile Machinery Exhibition



SNC



SDS®-1000



Apparel CAD · PGM-2



SES®122-FF

•Receives the *Tecnica della Confezione* International Award.

•Receives the *Jubilee Award from the Textile Institute of Great Britain*.

•Company shares are publicly listed on the First Section of the Tokyo Stock Exchange.

•Opens "Communication Space" showrooms at Tokyo and Osaka Branch Offices.

•Establishes the SHIMA SEIKI Design Center of Milano in Italy.

•Installs a PV (photovoltaic) system.

•Receives the *Minister of Economy, Trade and Industry Award for achievements in intellectual property management*.

•Establishes the SHIMA SEIKI Design Center of New York.

•Establishes SHIMA SEIKI WIN WIN LTD., in Hong Kong.

•Acquires 100% of the shares held by SHIMA-ORSI S.R.L. in Milan, Italy.

•Receives the 53rd Okochi Memorial Foundation Grand Production Prize.

•Establishes SHIMA SEIKI WIN WIN SHANGHAI LTD. in China.

•Receives *Minister of Economy, Trade and Industry Award for efforts including factories that blend in with the natural surroundings*.

•Establishes SHIMA SEIKI KOREA INC. in Seoul.

•Establishes TOYOBOSHI KOGYO CO., LTD. in Japan.

•Establishes SHIMA SEIKI SPAIN, S.A.U.

•Opens "Knit Museum" in Wakayama City.

•Masahiro Shima is awarded the title of *Commander of the Order of the Star of Italian Solidarity* (Commendatore dell'Ordine della Stella della Solidarieta Italiana), which is the second-highest honor of the Order, for his contribution to the Italian Republic.

•Completes construction of the FA3 plant, which is dedicated to the assembly of WHOLEGARMENT® knitting machines.

•President Masahiro Shima is inducted into the Hall of Fame to American Textile History Museum.

1991

1993

1994

1995

1996

1997

2000

2001

2002

2003

2004

2006

2007

2008

2009

2010

2011

2012

•Develops the SES®122-S computerized flat knitting machine with full-time spring-loaded sinker system.

•Enters the CAD/CAM field with its P-CAM® computerized fabric cutting machine.

•Develops the HP2 design system.

•Develops the SWG® series, the world's first commercially productive computerized WHOLEGARMENT® knitting machines, at the 12th ITMA exhibition in Milan, Italy.

•Develops a new line of Design Systems including the SDS®-HP3.

•The SWG®-FIRST® computerized WHOLEGARMENT® knitting machine featuring the newly developed SlideNeedle™, debuts at OTEMAS.

•Introduces its All-in-One design system, the SDS®-ONE.

•Develops its new SIP-100F plateless printing system.

•Receives ISO 9001 certification for Design and Manufacturing of Apparel Design Systems.

•Develops the SWG®021 WHOLEGARMENT® knitting machine.

•Develops the NewSFG 18 gauge model glove flat knitting machine.

•Develops the SSG® and SIG® series of flat knitting machines with WideGauge® technology and outstanding cost performance.

•Develops the SDS®-ONE APEX which expresses WHOLEGARMENT® designs in 3D.

•Develops the MACH2®X and MACH2®S WHOLEGARMENT® knitting machines with over twice the productivity of previous knitting machines.

•Develops the MACH2®X153 18L machine capable of producing high-quality ultrafine gauge WHOLEGARMENT® knitwear.

•Develops the MACH2SIG® intarsia machine capable of producing refined and sophisticated multi-colored patterns.

•Develops the SSR® computerized flat knitting machine.

•Develops the SWG®-FIRST® 154 computerized flat knitting machine, which allows shaping in 21 gauge—a world first.

•Introduces the SDS®-ONE APEX3 design system, which boasts greater speed and an improved simulation function.

•Develops the SIP160F2, an inkjet printing machine that offers faster operation.

•Boosts the MACH2®X lineup with the development of the MACH2®X123 computerized WHOLEGARMENT® knitting machine, which offers power savings and a smaller footprint.



SWG®-V



SDS®-ONE



SDS®-ONE APEX



MACH2®X

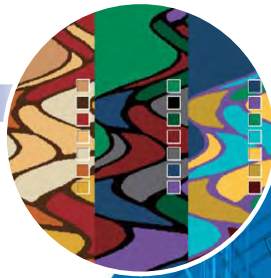
Based on our philosophy of creating something totally new, we  
to come out with technologically innovative products that satisfy

fuse creativity and refined sensitivity  
our customers' exacting needs.



### Design

Planning times are reduced drastically through realistic simulation of materials and products. Three-dimensional simulation is also supported.



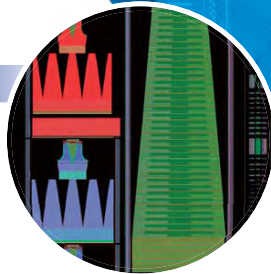
### Virtual Sampling

A wealth of design functions are used for design patterns and colorways, enabling attractive designs to be created with high efficiency.



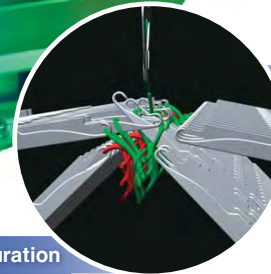
### KNITCAD®

Using the knitting database, complex knitting patterns can be created easily and efficiently.



### 4-Bed Configuration

Four independent needle beds make it possible to carry out complex, WHOLEGARMENT® knitting.



### i-DSCS+DTC®

Capable of automatically adjusting yarn feed, this system eliminates irregularities caused by yarn elasticity and differences in humidity, thereby contributing to improved product quality.



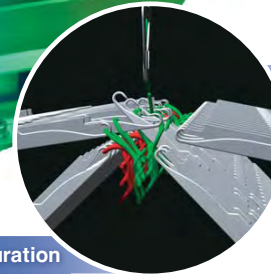
### R2CARRIAGE® System

This carriage system plays a critical role in improving productivity. With its enhanced acceleration and deceleration and improved maximum speed, it significantly reduces knitting times.



### SlideNeedle™

While only six knitting techniques are possible with conventional latch needles, these newly introduced slide needles can support 12 different techniques, thereby enabling the production of a wider variety of fabrics.



## A Fusion of Computers and Mechatronics





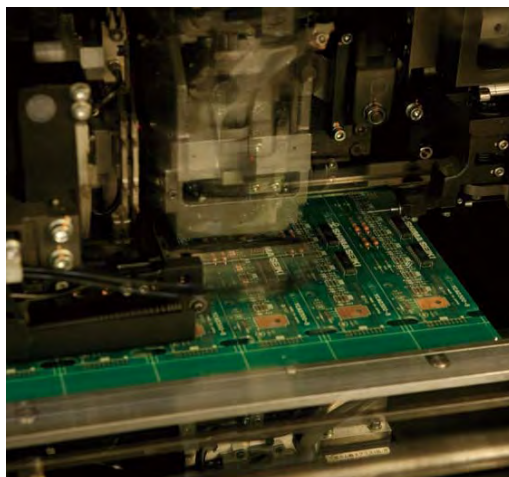
### Processing Technology

High quality is assured with highly skilled precision.



### Electronic Components

Precision electronics technology is applied to every step of the manufacturing process.



### Assembly

Behind SHIMA SEIKI's success is a wealth of advanced technologies.



Assembly of WHOLEGARMENT® computerized knitting machines



Assembly of computerized knitting machines



Assembly of glove knitting machines



Assembly of computerized fabric cutting machines (P-CAM®)



Assembly of design systems (SDS®-ONE APEX3)



We aspire to be a source of innovative manufacturing by making proposals based on our vision for the future.

## Planning and Proposals



Planning knit products



A new sample proposal planned at the company

## Showrooms



Headquarters showroom



SHIMA SEIKI DESIGN CENTER OF NEW YORK (U.S.A.)



SHIMA SEIKI DESIGN CENTER OF MILANO (ITALY)



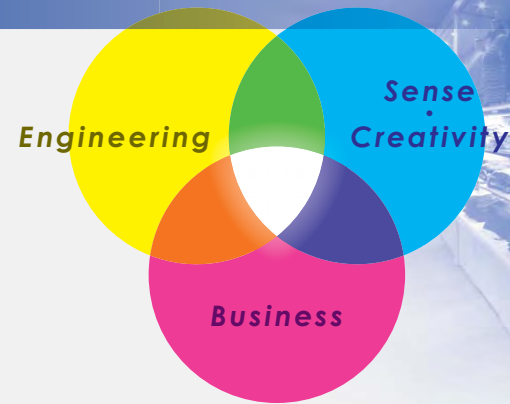
SHIMA SEIKI DESIGN CENTER OF HONG KONG (CHINA)



SHIMA SEIKI DESIGN CENTER OF SHANGHAI (CHINA)



Tokyo Communication Space (JAPAN)



## Providing the Latest Information

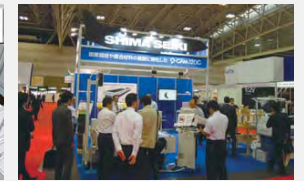
The Hall of Fame to American Textile History Museum



Exhibition at FIT (U.S.A.)



SHIMA SEIKI Haute Technology Laboratory (DREXEL UNIVERSITY, U.S.A.)



Japan International Aerospace Exhibition 2012 (JAPAN)

## Training and Support



Training on flat knitting machines



Training on design systems

CAD/CAM System



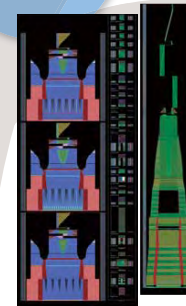
3D Loop Simulation



Plateless Printing System



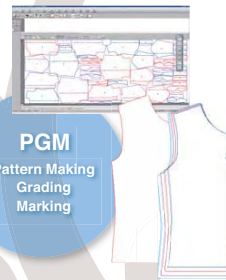
Knit Programming



Colorway



3D Fitting Simulation

PGM  
Pattern Making  
Grading  
Marking

Sales Promotion

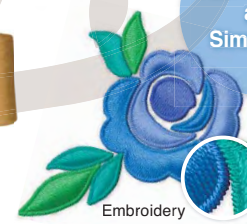


Planning

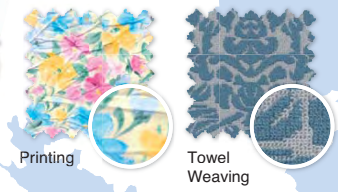
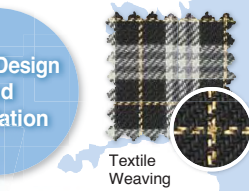
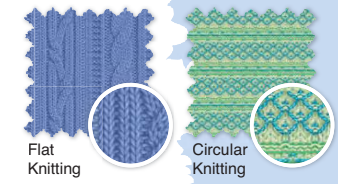


All in ONE

Yarn



Fabric Design and Simulation



Design System

From product planning and design to sample production and sales promotion, SHIMA SEIKI products boost efficiency at various stages of apparel manufacturing.



# WHOLEGARMENT®

Based on SHIMA SEIKI's pioneering flat knitting machine technology, WHOLEGARMENT® is the world's first seam-free knitwear. Each WHOLEGARMENT® product is knit in three dimensions in one entire piece, meaning customers can enjoy a range of benefits like never before.

## People-Friendly

- Beautifully shaped, with no bulky seams
- Soft and light, with superb comfort and fit
- Superior stretch characteristics means unrestricted body movement

## Eco-Friendly

- Produces only as many pieces as needed, when needed
- Uses only as much yarn as needed
- Saves on resources



**MACH2® X**  
SHIMATRONIC® WHOLEGARMENT®  
Computerized Flat Knitting Machine



**MACH2® S**  
SHIMATRONIC® WHOLEGARMENT®  
Computerized Flat Knitting Machine



**FIRST®**  
SHIMATRONIC® Computerized Flat Knitting Machine  
with WHOLEGARMENT® Capability



SWG® 061N

**SWG®021N/041N/061N/091N**  
SHIMATRONIC® WHOLEGARMENT®  
Computerized Flat Knitting Machine



Tops: MACH2® X  
Skirt: MACH2® X



User-friendly ease of operation, speed, and multiple functions have made our computerized flat knitting machines a success on the world market. A full line-up offers users the ability to manufacture knitwear that is always at the leading edge of fashion.

#### Computerized Flat Knitting Machines



**MACH2SIG®**  
SHIMATRONIC® Computerized Flat Knitting Machine



**SIR123**  
SHIMATRONIC® Computerized Flat Knitting Machine



**SCG122SN**  
SHIMATRONIC® Computerized Flat Knitting Machine



**LAPIS®**  
SHIMATRONIC® Computerized Warp-Weft Hybrid Flat Knitting Machine



**SIR122**  
SHIMATRONIC® Computerized Flat Knitting Machine



**SSR112**  
SHIMATRONIC® Computerized Flat Knitting Machine



**SSG®202/234/236**  
SHIMATRONIC® Computerized Knitting Machine with Two-, Four- or Six-System Tandem Capability

Tops: MACH2SIG®

#### Design System



#### Plateless Printing System

**SIP-160f2**  
SHIMATRONIC® Textile Fabric Printer



SIP-160f2L

#### Computerized Fabric Cutting Machines

**P-CAM®** 100/160/200  
SHIMATRONIC® Single-Ply Fabric Cutting Machine



**P-CAM®** 161/162/181/182/183/201/202/203/221/222  
SHIMATRONIC® Multi-Ply Fabric Cutting Machine  
1620/1820/2020

#### Glove/Sock Knitting Machines



**SFG-I**  
SHIMATRONIC® Automatic Seamless Glove Knitting Machine



**SPF-W**  
SHIMATRONIC® Fully Automatic Sock Knitting Machine







Green coverage of over 30% of total factory space provides a pleasant working environment.  
Total electrical output from solar panels installed on our factory roofs reaches 1,550 kW for the SHIMA SEIKI Group as a whole.

## Environmental Initiatives

### Eco-friendly WHOLEGARMENT® knitwear

#### WHOLEGARMENT®



- Reduction of cut loss and material waste
- Reduction of energy and CO<sub>2</sub> emissions required to dispose of material waste



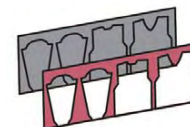
Reduction of material usage due to seam-free construction

Quick Response

Produces only as many pieces as needed

Reduces leftover inventory

#### Conventional knitting



30% material loss from cutting

cutting

sewing

linking



Seam allowance

### Environmental facilities



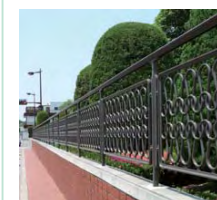
Solar power generation system provides power for factories.

### Environmentally friendly factory

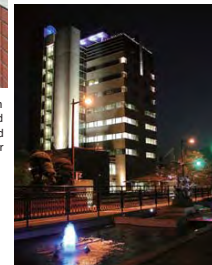


Natural sunlight at the FA2 plant contributes to a 50% reduction in electricity consumption.

### Concern for the surrounding environment



Sidewalks were built on parts of the premises, and scenery has been improved by putting electric power lines underground.





Worldwide recognition brings with it the responsibility to live up to customers' expectations as a reliable international corporation.  
SHIMA SEIKI's global network features an impressive list of contacts in domestic and overseas locations.

- Headquarters  
■ Local subsidiaries, branch offices  
● Contacts



SHIMA SEIKI EUROPE LTD. (U.K.)



SHIMA SEIKI ITALIA S.p.A. (ITALY)



SHIMA SEIKI (HONG KONG) LTD. (CHINA)

SHIMA SEIKI WIN WIN SHANGHAI LTD.  
(CHINA)

SHIMA SEIKI U.S.A. INC.



## Overseas Subsidiaries

**1 SHIMA SEIKI (HONG KONG) LTD.**

1901, 19/F, Lu Plaza, No.2 Wing Yip Street,  
Kwun Tong, Kowloon, HONG KONG  
Tel:852-2898-8339 Fax:852-2558-8332  
enquiry@shimaseiki.com.hk

**■ SHIMA SEIKI DESIGN CENTER OF HONG KONG****2 SHIMA SEIKI WIN WIN DONGGUAN LTD.**

No.236, Fu Li Road, Xiang Wei Cun, Dalang  
Town, DongGuan City, Guangdong Province,  
CHINA 523776  
Tel:86-769-8318-9234 Fax:86-769-8318-9214  
dongguan@shimaseiki.com.hk

**■ SHIMA SEIKI DESIGN CENTER OF DONGGUAN****3 SHIMA SEIKI WIN WIN SHANGHAI LTD.**

A12, 11/F, Shanghai Mart, No.2299 Yan An Road (West),  
Shanghai, CHINA 200336  
Tel:86-21-5270-9898 Fax:86-21-5270-9797  
shimawinwinsh@shimawinwinsh.com

**■ SHIMA SEIKI DESIGN CENTER OF SHANGHAI**

## China Network

BEIJING	INNER MONGOLIA
SHANDONG (HAIYANG)	ZHANGJIAGANG
WUJIANG	TONGXIANG
TAIZHOU	FUJIAN (QUANZHOU)
SHANTOU	

**4 SHIMA SEIKI (HONG KONG) LTD. CAMBODIA BRANCH**

No.3BC, St.306, Phnom Penh, CAMBODIA  
Tel:855-236-388-882 Fax:855-2398-7465  
enquiry@shimaseiki.com.hk

**5 SHIMA SEIKI (THAILAND) CO., LTD.**

96/81-82 Moo 9, Soi Chaikul-Tower, Rama 2 Road,  
Bangmod, Jomthong, Bangkok, THAILAND 10150  
Tel:66-2-452-0550 Fax:66-2-452-0537

**6 SHIMA SEIKI MFG., LTD., TAIPEI BRANCH**

1F, 30, Lane 583, Ruey Kuang Rd., Neihu,  
Taipei 11492, TAIWAN  
Tel:886-2-8752-3388 Fax:886-2-8797-5522  
shima-taipei@shimaseiki.co.jp

**7 SHIMA SEIKI KOREA INC.**

Seojung Bldg. 1F, 2F, 590-9, Guul-Dong,  
Kwangjin-Gu, Seoul, KOREA 143-200  
Tel:82-2-2216-4057 Fax:82-2-2216-4711  
sskorea@hanmail.net

**8 SHIMA SEIKI ITALIA S.p.A.**

Via Redeciesio 11-20090 Segrate (MI) ITALY  
Tel:39-02-216621 Fax:39-02-2139410  
info@shimaseiki.eu

**■ SHIMA SEIKI DESIGN CENTER OF MILANO**

**9 SHIMA SEIKI EUROPE LTD.**  
Sills Road, Willow Farm Business Park,  
Castle Donington, Derbyshire, DE74 2US, U.K.  
Tel:44-1332-814770 Fax:44-1332-850272  
info@shimaseiki.co.uk

**10 SHIMA SEIKI FRANCE SARL**

24, Rue du Moulin des Bruyeres 92400  
Courbevoie, FRANCE  
Tel:33-1-47-88-27-42 Fax:33-1-47-88-10-78  
info@shimaseiki.fr

**11 SHIMA SEIKI SPAIN, S.A.U.**

Poligono Industrial Can Salvatella, Calle  
Comadran 35 08210 Barbera Del Valles,  
Barcelona, SPAIN  
Tel:34-93-7293727 Fax:34-93-7180626  
shimaseiki@shimaseiki.es

**■ SHIMA SEIKI DESIGN CENTER OF BARCELONA**

**12 SHIMA SEIKI PORTUGAL, UNIPessoal LDA**  
Rua S. Juliao 241, Apartado 3142,  
Avintes 4431-801, PORTUGAL  
Tel:351-22-787-8580 Fax:351-22-787-8589  
shimaseiki@shimaseiki.pt

**13 SHIMA SEIKI MOROCCO SLU**

Lot 1, Rue 19, N° 17 Hay Al Qods,  
Bernoussi Casablanca, MOROCCO  
Tel:212-66 50 28 338  
hguenni@shimaseiki.es

**14 SHIMA SEIKI U.S.A. INC.**

22 Abeel Road, Monroe Twp., NJ  
08831, U.S.A.  
Tel:1-609-655-4788 Fax:1-609-655-3989  
info@shimaseikiusa.com

**■ SHIMA SEIKI DESIGN CENTER OF NEW YORK**

501 7th Avenue Suite #412 New York,  
NY 10018, U.S.A.  
Tel:1-212-391-4020 Fax:1-212-391-4016

## Branch & Sales Office

TSC : Technical Service Center

### Tokyo Branch Office

Shima Nihonbashi Building 10F, Chuo-ku Nihonbashi 2-8-6, Tokyo  
103-0027 JAPAN

Tel: 81-3-3246-0511 Fax: 81-3-3246-0515



### Tokyo TSC Kofu

Nakakoma-gun Showa-cho Nishijo 3688, Yamanashi 409-3866  
JAPAN

Tel: 81-55-222-0511 Fax: 81-55-222-0515

### Tokyo TSC Ota

Ota-shi Uchigashima-cho 1448-7, Gunma 373-0813 JAPAN

Tel: 81-276-47-0511 Fax: 81-276-47-149

### East Japan Branch Office

Gosen-shi Funakoshi Aza Enakase 133-1, Niigata 959-1805 JAPAN  
Tel: 81-250-43-0511 Fax: 81-250-43-0981

### East Japan TSC Yamagata

Kubota 2-1-34, Yamagata 990-2482 JAPAN  
Tel: 81-23-643-4629 Fax: 81-23-644-7907

### East Japan TSC Fukushima

Date-shi Hobara-cho Aza Rokumanbo 59-1, Fukushima 960-0639  
JAPAN

Tel: 81-24-576-3291 Fax: 81-24-575-4563

### West Japan Branch Office

Osaka Ekimae Building 4, 15F, Kita-ku Umeda 1-11-4-1500, Osaka  
530-0001 JAPAN

Tel: 81-6-6344-0511 Fax: 81-6-6344-2204



### West Japan TSC Nagoya

Nagoya-shi Naka-ku Iseyama 1-4-10, Aichi 460-0026 JAPAN  
Tel: 81-52-363-0511 Fax: 81-52-323-8210

### West Japan TSC Senshu

Izumotsu-shi Kitatoyonaka-cho 2-17-20, Osaka 595-0012 JAPAN  
Tel: 81-725-31-0511 Fax: 81-725-31-4480

### West Japan TSC Shikoku

Higashikagawa-shi Minato 1887-2, Kagawa 769-2701 JAPAN  
Tel: 81-879-24-0511 Fax: 81-879-24-0515

## Factory

85 Sakata, Wakayama 641-8511 JAPAN

Tel: 81-73-474-8210 Fax: 81-73-474-8270

## Related Facilities



### Fusion Museum

Forte Wajima 3F, Honmachi 2-1, Wakayama 640-8033 JAPAN  
Tel: 81-73-488-1962



### Auberge South Terrace

Nishimuro-gun Shirahamacho 2998-10, Wakayama 649-2211  
JAPAN

Tel: 81-739-42-4555 Fax: 81-739-43-2720



## Corporate Profile

(as of March 31, 2012)

**Company Name** SHIMA SEIKI MFG., LTD.

**President** Masahiro Shima

**Established** February 4, 1962

**Headquarters** 85 Sakata, Wakayama  
641-8511 Japan

Tel : 81-73-474-8211

(N. & S. America and Europe Sales Sect.)

81-73-474-8210 / 8212

(Asia Sales Sect.)

81-73-474-8202

(Middle East, Africa & Oceania Sales Sect.)

81-73-474-8207

(Glove & Socks Machinery Sales Sect.)

Fax: 81-73-474-8270

**Website** <http://www.shimaseiki.com>

**Sales** 31,036 million yen  
(non-consolidated; fiscal year ending March 2012)

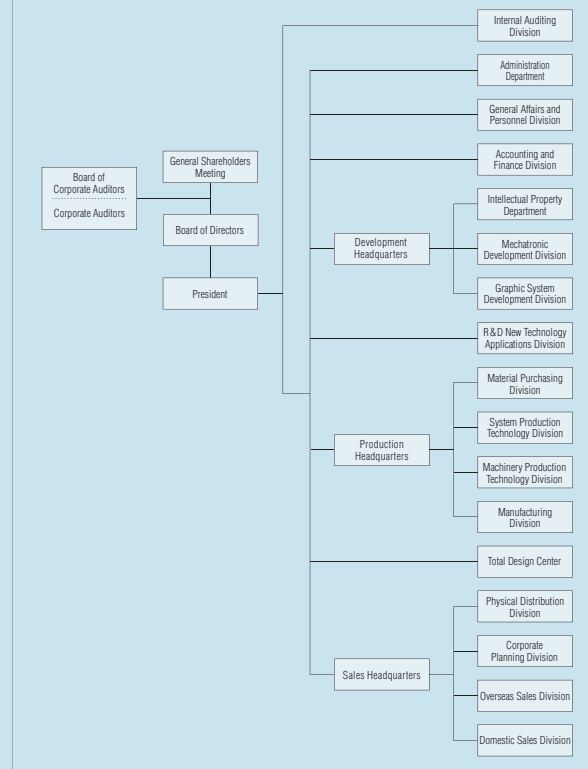
**Capital** 14,859.8 million yen

**Employees** 1,190

**Main Banks** The Bank of Tokyo-Mitsubishi UFJ, Ltd.  
The Senshu Ikeda Bank, Ltd.  
The Kiyo Bank, Ltd.  
Sumitomo Mitsui Banking Corporation  
The Shoko Chukin Bank, Ltd.  
Mitsubishi UFJ Trust and Banking Corporation

## Organization

(as of June 30, 2012)



Headquarters building



Entrance hall (first floor, headquarters building)



High-Vision Hall with a 214-inch "Blue ocean" seamless screen

SHIMA SEIKI, WHOLEGARMENT, FIRST, MACH2, SWG, SES, SIR, SIG, SSG, SSR, LAPIS, SCG, SDS, SDS-ONE, SDS-ONE APEX, P-CAM, SlideNeedle, R2 CARRIAGE, DSCS, i-DSCS+DTC, and SHIMATRONIC are either registered trademarks or trademarks of SHIMA SEIKI MFG., LTD. in Japan and/or other countries.